

# Newsletter

Wichita, Kansas

October, 2005

## Officers

### • President

Gloria Henson  
(620) 663-7675  
snowbird@cox.net

### • Vice-President

Norene Haynes  
(316) 832-1740

### • Treasurer

Linda Zimmerman  
(316) 684-8583

### • Secretary & Website

Suzanne Hamilton Mies  
(316) 260-8119  
shmies@hotmail.com

## Monthly Meetings

- 3rd Tuesday, 7 p.m.
- Evergreen Library  
2601 N Arkansas

## Useful Web Sites

Stained Glass Guild of Kansas  
stainedglassguild.tripod.com

### Free Patterns

www.pumpkinglow.com  
www.kerfdesigns.com  
www.lannaronca.it/Stencil.htm  
www.coloring.ws/simple\_shapes.htm  
www.carvingpatterns.com  
www.ladiesinred.org/designs.html

### Publications

www.glass-on-metal.com

## Points Of Interest

### Pattern Sources

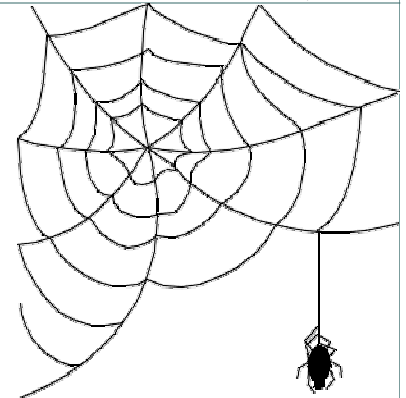
The flower on the newsletter last month was from the Microsoft website [www.microsoft.com](http://www.microsoft.com). Just go to the Clip Art page and download whatever takes your fancy. Many of the clip art available lend themselves very nicely to being patterns for stained glass, mosaic and etched pieces. Additionally, they are very easy to resize.

Other pattern idea sources are clip art, coloring pages, quilt blocks, advertisements, photos, arts and craft projects, scrapbooking, rubber stamps, stencils, painting, engraving, tattoos, Intarsia (scenes made of inlaid wood) and wood carving. Then there is food art such as watermelon & pumpkin carving, cookie cutters, cake

decorating, chocolate candy designs, to name just a few. And don't forget the wide variety of needlework patterns for plastic canvas, cross-stitch, redwork, embroidery, etc.

Fonts are a surprising place to find what you are looking for. Browse through the fonts already on your computer or download new fonts. Some of the fonts with graphics are called dingbats. Or a regular looking font may have just the right graphic in it's "Symbol" list.

WebShots has beautiful photos of mountains, flowers, and more that would make amazing stained glass or mosaic pieces.  
[www.webshots.com](http://www.webshots.com)



Yard art patterns are another good source. Chick Iglehart used to have a wonderful web site where the patterns were advertised as useful for a variety of hobbies. His free site is gone, but you can still purchase Chick's patterns at [www.craftassoc.com/amfavor.html](http://www.craftassoc.com/amfavor.html)

Maximize your online searching. Click on Advanced Search. Select "Any Language". Try your image search with only black & white, then try with just grayscale.

## Meeting News

The 18th is the meeting we've been looking forward to: **The Contest**

It's your chance to show off. For maximum fun, everyone should participate and bring something, whether it be foiled or leaded, bead work, mosaic, fused, etched,

blasted, blown, slumped, jewelry, big or small. It's all welcome. Don't forget, winner gets a prize.

We're having a pattern exchange at this meeting. Do you have a pattern that would make a good gift item or be a hot seller at a craft show? Bring it!

If he's in town, Ron Hayworth might share his beadmaking with us.

The grinder and a Morton System will be available to use during the meeting.

Thanks to Kathy Smallwood for the treats.

## STAINED GLASS GUILD OF KANSAS



c/o Suzanne Hamilton Mies  
4444 S West St #55  
Wichita, KS 67217

## Free Demo

Randy Rayer is giving a free demo on Tiffany Lamps and how to make lamps. This event is next Wednesday, October 19th, from 6 to 7:30 p.m. Stop by Beardens to reserve a space.



## Classes

### *Beardens*

Being offered are a variety of classes and times, such as Advanced Sandblasting, Angel Building, Beginning & Better Techniques, Leading, Mosaics, Bead Making, Beginning & Advanced Stepping Stones.

[www.rayersinc.com/classes.html](http://www.rayersinc.com/classes.html)

### *City Arts*

Upcoming classes are Glass Blowing, Glass Casting, Glass Jewelry, Glass Tiles and Fusing.  
[www.wichitaarts.com/Classes](http://www.wichitaarts.com/Classes)

## Tree Update

Did you make it to the September meeting? Bud Fair did a great job on cutting out and sanding the tree bases. And Troy made short work of cutting the short pieces of rods with his electric saw. A big Thanks to both of them. Suzanne has the list of those still needing to pick up their tree base and rods and you can get them from her.

Several members at the last meeting had already cut the pieces for their tree, so the new pattern couldn't help them. A good discussion at the meeting resulted in a solution. You can cut 3/8" off of the back end of each piece on the bottom row, and then 1/8" off the row above that. OR, leave the pieces as they are and notch the glass in four spots on each of the bottom two rows to fit up around the legs of the inside frame. See an example of this last method at Mathews Gallery.

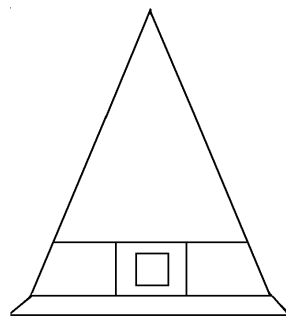
Want to make more trees but don't want to cut the base yourself? Hobby Lobby has an unfinished 6" wood base for \$1.47. Hollow tubes in foot long lengths are available for sale at Mathews Gallery and Beardens.



## Exhibits

### *Tiffany by Design*

Visit the Wichita Art Museum website for the list of community and museum events being held in conjunction with the Tiffany lamp exhibit.  
[www.wichitaartmuseum.org/tiffany.html](http://www.wichitaartmuseum.org/tiffany.html)



Randy Rayer will be at the museum to answer questions from 11 a.m. to 2 p.m. on Saturdays Oct. 15th & 22nd, Nov. 12th & Dec. 10th.

Free Saturday Family Artventures of note: Oct. 22nd—Light of Tiffany, create a stained glass-like lamp; Dec. 10th—Tiffany Holiday Ornaments, create a holiday ornament. Take the kids to these, probably not real glass.

### *Karg Art Glass*

Located north of Wichita in Kechi, just west of Oliver on 61st Street. Currently featuring the work of Randal Harrell Young through Oct. 23rd. Hours M-Sat 8 a.m. to 6 p.m., Sun 11 a.m. to 4 p.m. Free Admission.